

ELECTRIC STACKER

Capacity : 1500 kg
@ 600 mm LOAD CENTRE

AC VERSION



Features

- ✓ Compact design for negotiating narrow aisles
- ✓ Sleek but strong mast for better visibility and stability
- ✓ Regenerative braking for power saving
- ✓ Sideways battery change
- ✓ Electronic braking and speed control
- ✓ Multiple speed mode
- ✓ Intelligent speed reduction with respect to mast position and platform
- ✓ Intelligent microprocessor based MOSFET controller of Curtis make
- ✓ Five point wheel configuration with spring suspension for positive traction, grip stability
- ✓ Heavy duty sealed limit switch
- ✓ Steel coil protected hydraulic hoses and pipe fittings

Safety features

- ✓ Anti Roll back on gradient
- ✓ Side stabilizer
- ✓ Safety interlock for lifting after FFH
- ✓ Sturdy platform
- ✓ Manually controlled proportional valve for safe lowering and lifting operation

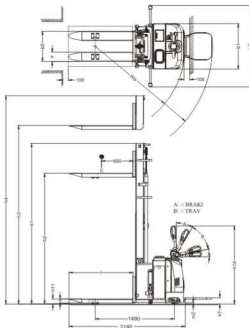


VVE
Series

TECHNICAL SPECIFICATION

CHARACTERISTICS	1.1	Manufacturer	KION INDIA
	1.2	Model Designation	VVE 15
	1.3	Power unit: battery/diesel	BATTERY
	1.4	Operation: manual, stand-on, seated	STANDING
	1.5	Load Capacity	1500
	1.6	Load center	C (mm) 600
	1.7	Back of fork to Load wheel center	X (mm) 709
	1.8	Wheelbase	y (mm) 1490
WEIGHT	2.1	Service weight incl. battery (HVT 6.5m mast)	1600
WHEELS & TYRES	3.1	Tyre	POLYURETHANE
	3.2	Tyre size, front (Load Wheel)	mm Ø82 x 75
	3.3	Tyre size, rear (Caster Wheel/Drive wheel)	mm (Ø135 x 60) / (Ø230x75)
	3.4	Tyre size, side stabilizer	mm (Ø70 x 25)
	3.5	Wheels, number front & rear & side (drive)	mm 4 & 2 & 2, 1x
	3.6	Track width, front - 570/685 wof	b10 mm 394 / 509
	3.7	Track width, rear 850 wide chassis	b11 mm 658
DIMENSIONS	4.1	Mast height, lowered	h1 mm 2150
	4.2	Freelift	h2 mm 1640
	4.3	Max. Lift Height	h3 mm 4500
	4.4	Mast height, extended	h4 mm 4970
	4.5	Overall length platform open / close	l1 mm 2680 / 2180
	4.6	Width of across fork	b5 mm 570 / 685
	4.7	Length to fork face platform closed / open	l2 mm 990 / 1480
	4.8	Overall width	mm 850
	4.9	Overall width - side stabilizer open / closed	b2 mm *1530 / 850
	4.10	Fork dimension	b/l mm 75x176x1200
	4.11	Width of fork carriage 570 / 685	b3 mm 582 / 697
	4.12	Platform height	h7 mm 150
	4.13	Platform length	mm 500
	4.14	Height of fork lowered	h11 mm 85
	4.15	Tiller handle height	h14 mm 1470
	4.16	Tiller handle height min.	h12 mm 1100
	4.17	Tiller handle height max.	h13 mm 1360
	4.18	Ground clearance at frame	m2 mm 30
	4.19	Asi with pallet 1000x1200 across fork platform C/O	Asi mm 2550 / 3020
	4.20	Asi with pallet 800x1200 across fork platform C/O	Asi mm 2510 / 2990
	4.21	Turning radius (platform closed/open)	Wa mm 1750 / 2250
PERFORMANCE	5.1	Travel speed, with/without load AC	km/hr 6 / 6
	5.2	Lifting speed, with/without load	m/s 0.11 / 0.16
	5.3	Lowering speed, with/without load for HVT	m/s 0.25 / 0.11
	5.4	Lowering speed, with/without load for HVM	m/s 0.17 / 0.13
	5.5	Gradability, with/without load	% 8 / 10
	5.6	Service brake	ELECTROMAGNETIC
	5.7	Steering	MECHANICAL
DRIVE	6.1	Motor type	AC
	6.2	Motor performance AC	Kw 1.5, S2 60 minutes rating
	6.3	Lift Motor rating	Kw 3 KW/S3 11% rating
	6.4	Battery Voltage/ rated capacity	v/Ah 24/345
	6.5	Battery weight	KG 300
	6.6	Transmission make/model	KION
	6.7	Transmission Type	REDUCTION GB
	6.8	Transmission Ratio	1.32
OTHERS	7.1	Hydraulic pump type	Gear pump
	7.2	Hydraulic pump displacement	cc/rev 3.20
	7.3	Control valve type	DIRECTION CONTROL
	7.4	Control valve flow	lpm 45
	7.5	Working pressure for attachment	bar 160

ELECTRIC STACKER-AC



NOTE 1: GENERAL TOLERANCE: (+/-) 12%
 NOTE 2: ELECTRICAL STACKER CONFORMING TO IS:7831
 NOTE 3: ALL DIMENSIONS & SPECIFICATIONS ARE SUBJECT TO VARIATION OF (+/-) 12%. PRODUCTS AND SPECIFICATIONS ARE SUBJECT TO IMPROVEMENTS & CHANGE WITHOUT NOTICE

Lift Height H3	Closed Mast Height H1	Extended Mast Height H4	Free Lift H2	Capacity AT 600 mm L.C - Kg. (Q)
6500	2800	6930	2300	500
6100	2715	6665	2080	600
5400	2450	5870	1920	750
4500	2150	4970	1640	1000
3650	2425	4200	MA	1150
3150	2180	3700	NA	1300
2750	1990	3300	NA	1500

Due to continuous improvements the dimensions are subjected to change without notice

* Note : Sr no 4.2 (b2) Free lift height & Sr. no 4.9 (b2) Side Stabilizer is not applicable for HVM Stacker.

OM VOLTAS
 DESIGNED TO WORK

KION India Private Ltd.

Plant : 5/4 Chandan Nagar, Pune-Nagar Road,

Pune - 411014, Maharashtra, India

Enquiries : in.enquiries@kiongroup.com

Contact : 020 - 67342-101 / 129 / 194 / 154 / 130 / 111 / 110

Sales Toll Free No. : 1800 270 9982

**100+
 CUSTOMER
 TOUCH POINTS**



FAKTKION 302.140.00

May 2018 / 00 - Qty.: 500